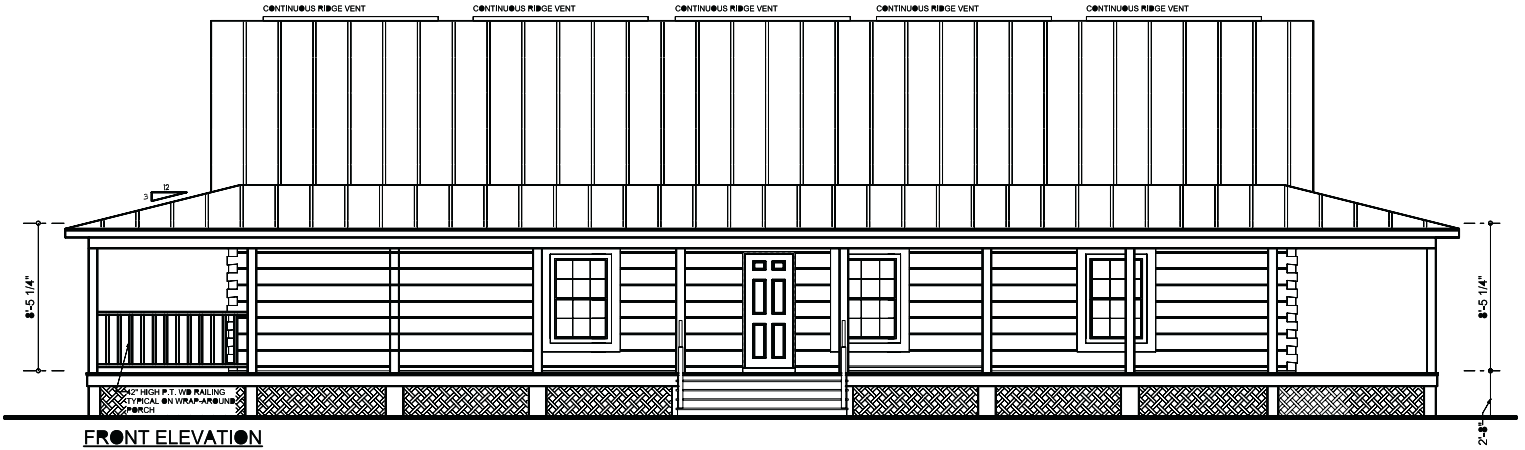
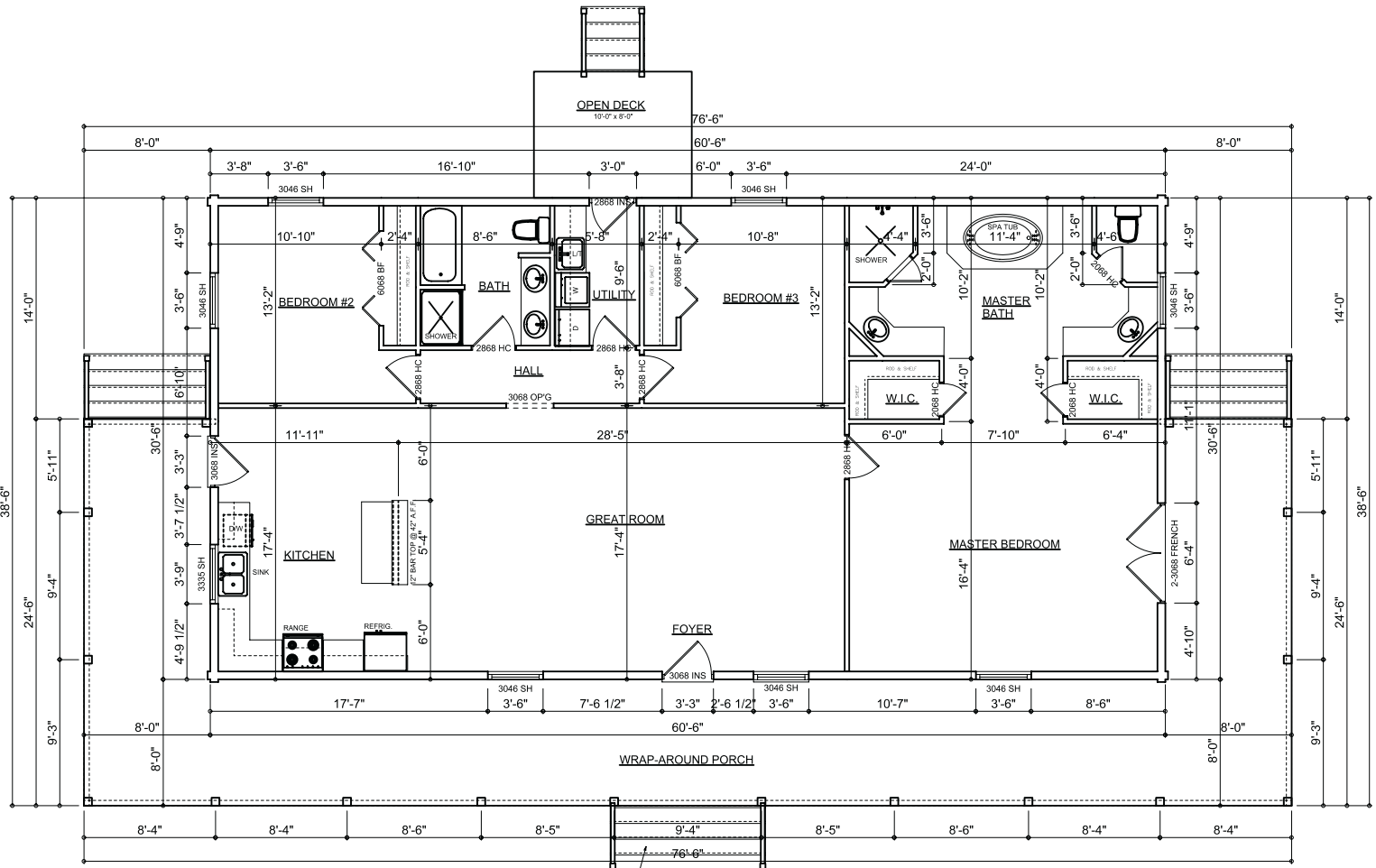


# CRACKER STYLE LOG HOMES

## IN THE PINES



**FRONT ELEVATION**  
SCALE: 1/4" = 1'-0"



**FLOOR PLAN**

SCALE: 1/4" = 1'-0"  
NOTE: ALL CEILING HEIGHTS SHALL BE 8'-0" UNLESS OTHERWISE NOTED

**AREA SUMMARY**

LIVING AREA	1845	S.F.
PORCH AREA	876	S.F.
<b>TOTAL AREA</b>	<b>2721</b>	<b>S.F.</b>

1/2" WIDE TREADS, 6/4" RISERS  
= TOTAL 3/2" RISE